

2019

2019

2011 12 15

:L0140A246020001

50,000

40,000

80%

10,000

20%

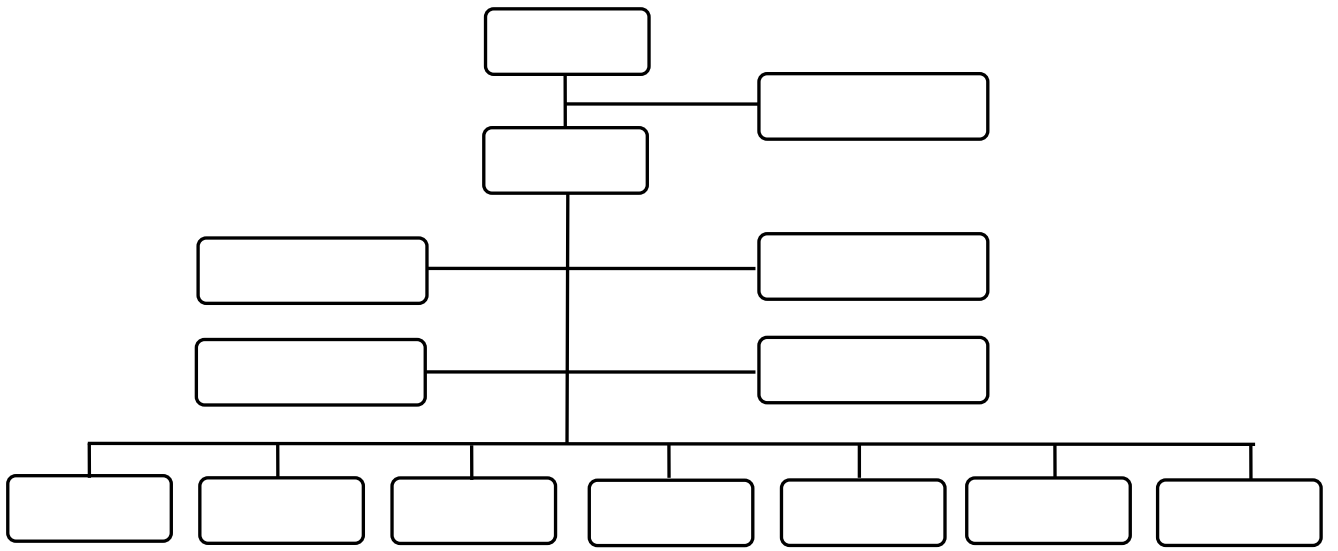
,

9146000058393623X5

115

23

1



3

4

()

1

,

1

2

3

2

,

1

,

()

2

15

3

2019

4

,

,

2019

2019 6 30		621,248.22
47,740.62 ,	33,293.09	286,933.99
227,602.80 ,	33,700	553,251.51 ,
550,790.29		67,996.71
50,000.00		
2019		7,505.34
5,270.29	3,832.43	

2019

6 30

1		10%	18.32%	
2	/	100%	-	
3	/	100%	63.55%	
4	/	40%	38.88%	
5	/	30%	7.91%	
6	/	20%	0.05%	

2019 6 30

71,528.69

50%

59,000

:

2019 8 31